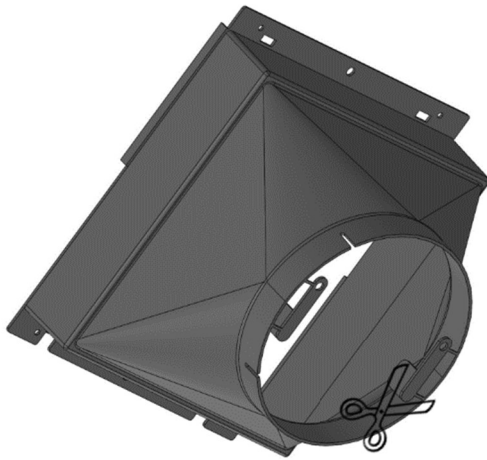


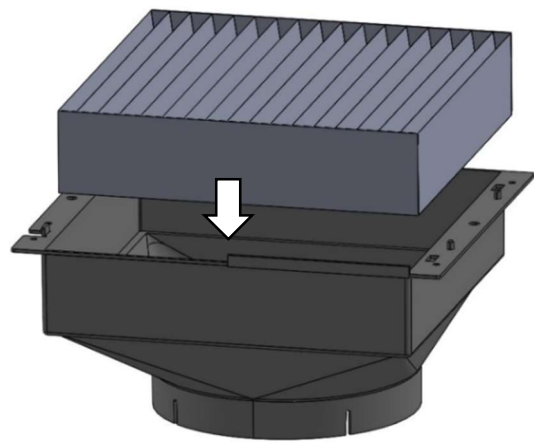
Contents:

1. Preparation for all assembling variants
2. Mounting on cooker hood
3. Mounting on cabinet
4. Packaging content

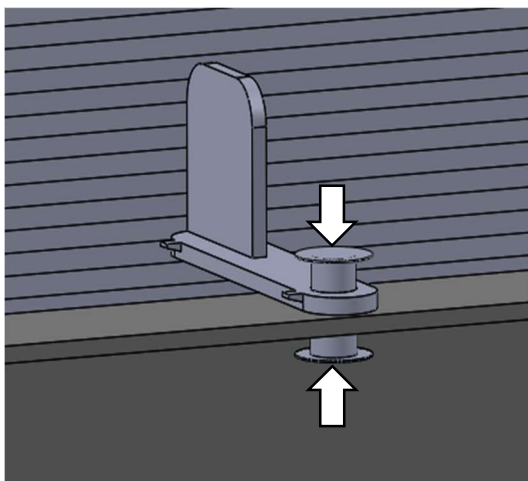
**1. Preparation for all assembling variants**



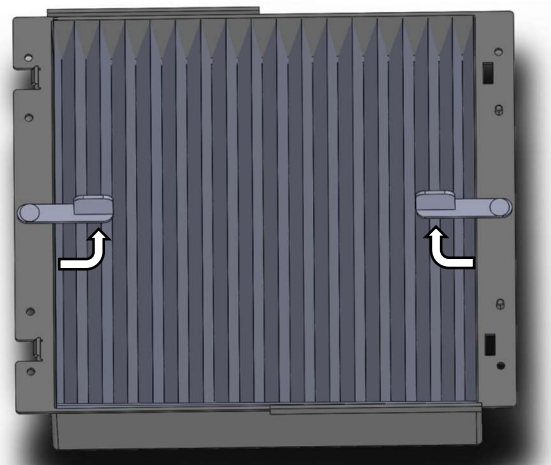
**1. Cut/break of the sliders**



**2. Insert the carbon filter into the Housing**

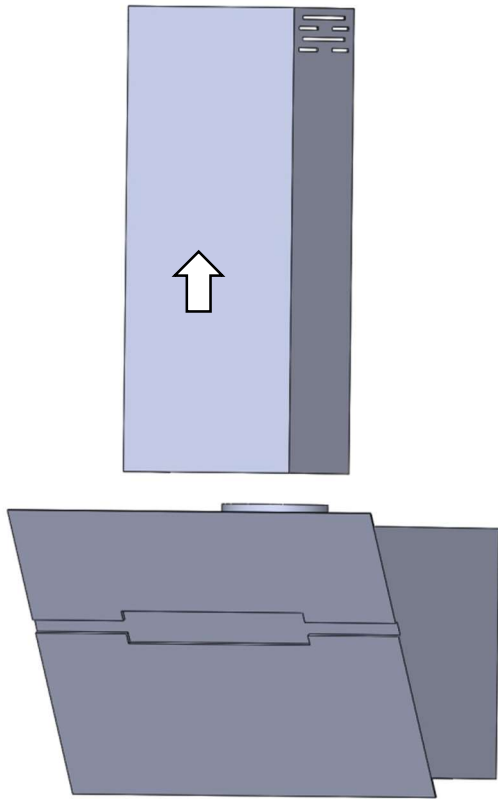


**3. Fasten the slider with the snap-in rivet**

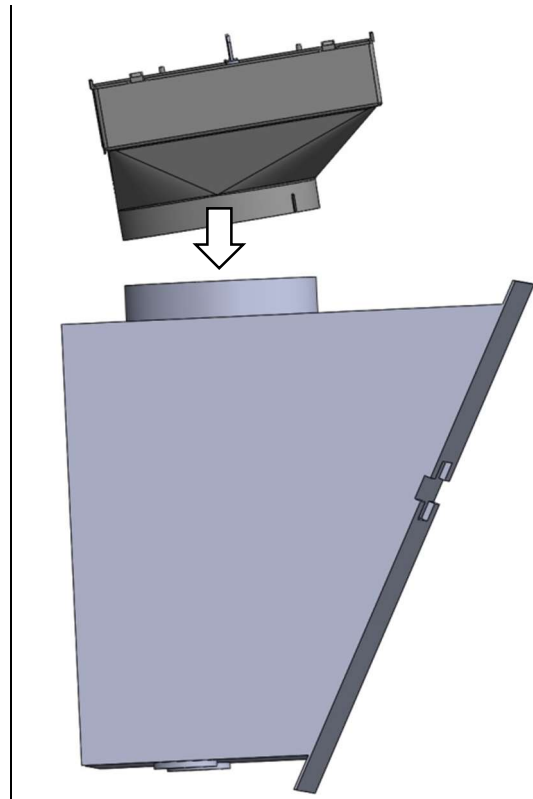


**4. Adjust sliders inwards to secure the filter**

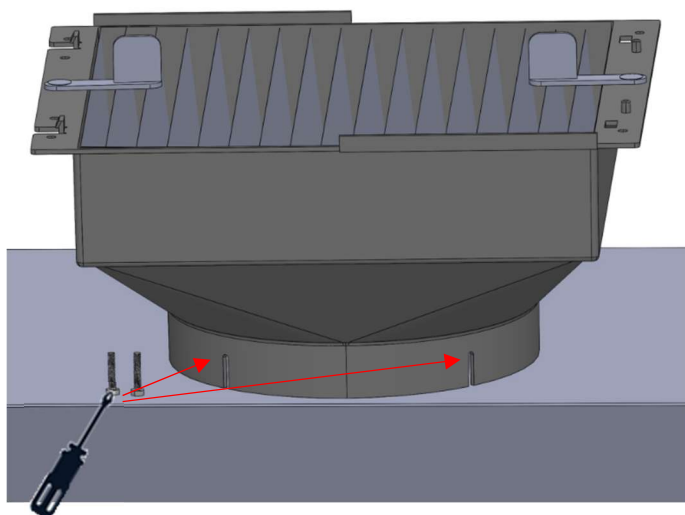
**2. Mounting on cooker hood**



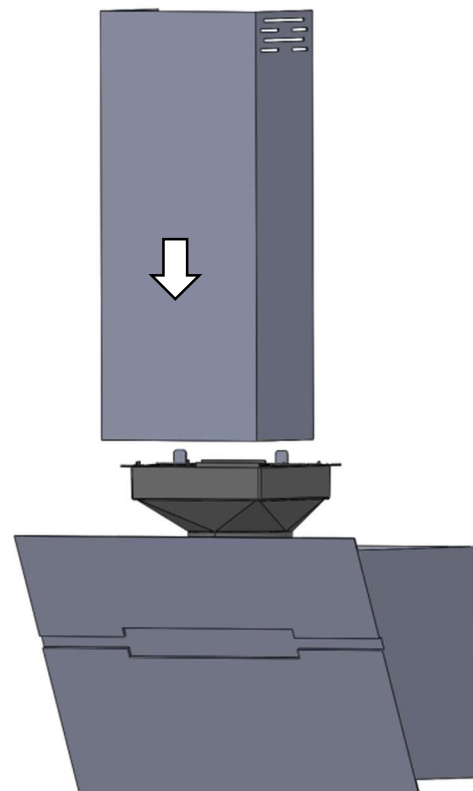
**1. Remove the chimney**



**2. Put the FF100 housing on cooker hood**

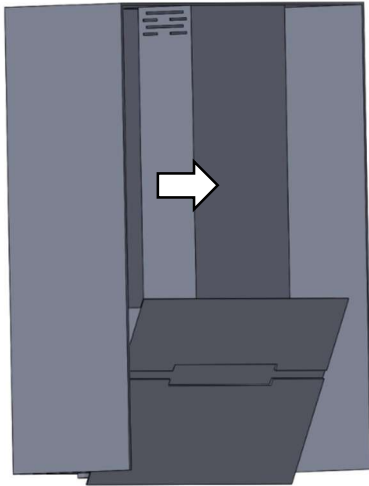


**3. Secure the housing with the cooker hood by using 2 screws**

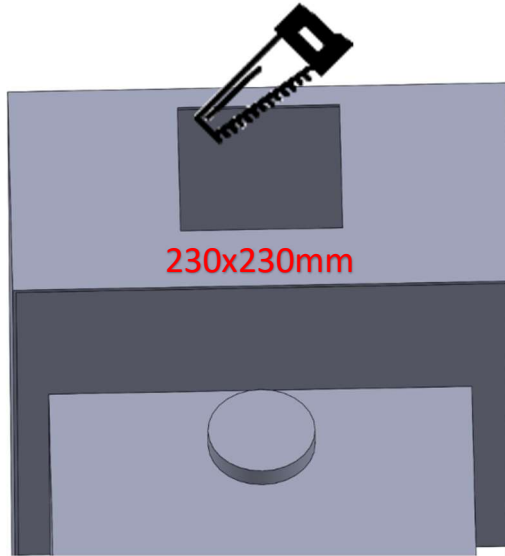


**4. Assemble the chimney again**

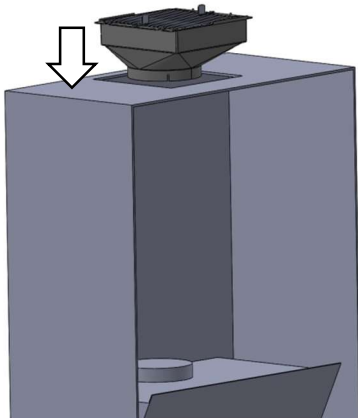
**3. Mounting on cabinet**



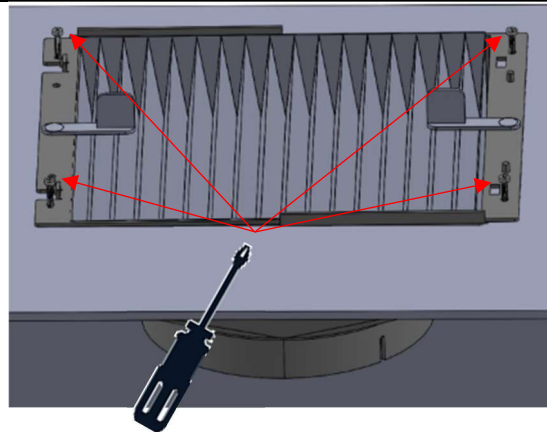
**1. Remove the existing Chimney**



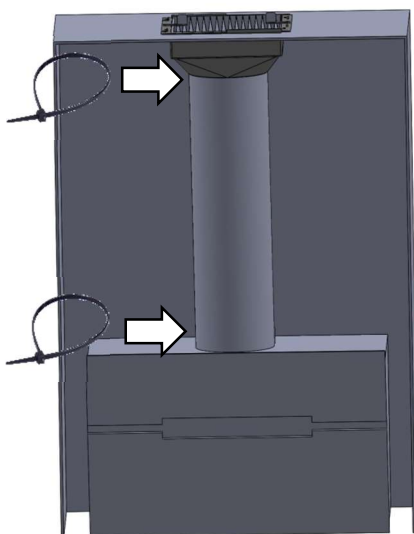
**2. Make a cut-out on the top of the cabinet**



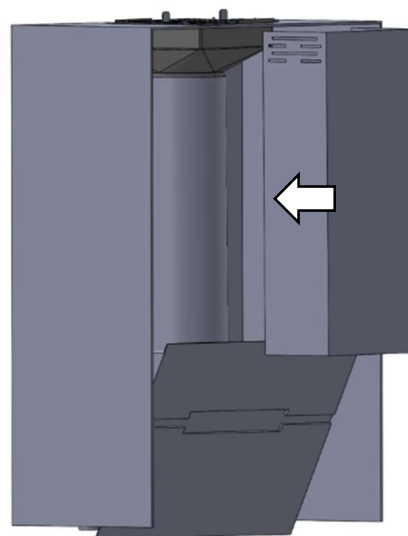
**3. Insert the housing into the cut-out**



**4. Secure the housing with the cabinet by using 4 screws**



**5. Connect the aluminium flex hose to the housing and also to the cooker hood by using the cable ties**



**6. Assemble the chimney again**

#### 4 Packaging content

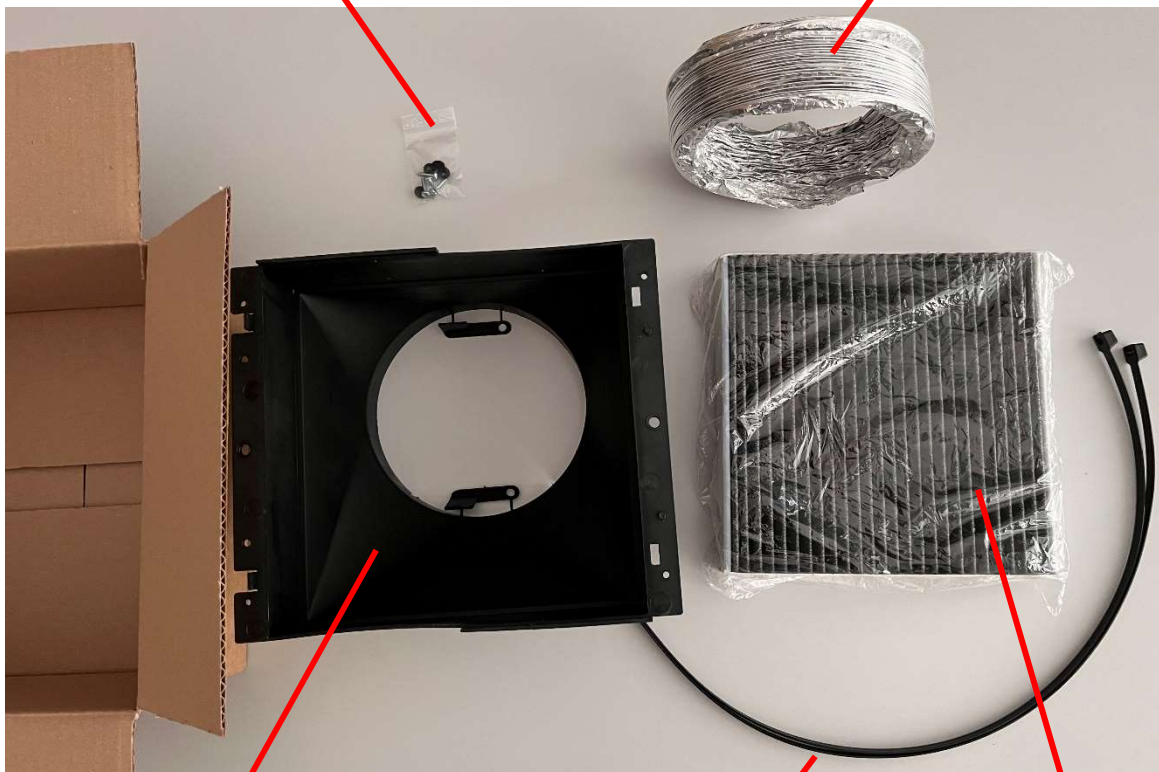
You may find below the packing content for the variant “assembling on cabinet” including aluminium flex hose and cable ties.



4 x Screws  
2 x Snap-in rivet



1 x Aluminium flex hose



1 x FF100 Housing

1 x pleated carbon filter

2 x cable ties